



Detectors for pipe and duct mounting

GJ-EX-V (ATEX)

The GJ-EX-V detector is an explosion-proof detector (ATEX) certified for application in zone 1, made of robust materials designed for use in hazardous environments. To be used for temperatures up to 80°C (EEx de IIC T5). GJ-EX-V can be fitted with different sensors according to the target gas.

Please order GJ-OX-V for oxygen.

Specifications:
-20°C to +80°C

Option: Available with mounting plate, rubber gasket and screws



GJ-EX 150 (ATEX)

The GJ-EX 150 detectors are an explosion-proof detector (ATEX) certified for application in zone 1, made of robust materials designed for use in hazardous environments. To be used for temperature up to 150°C (EEx de IIC T3).

GJ-EX 150 can be fitted with different sensors according to the target gas.

Specifications:
-20°C to +150°C

Option: Available with mounting plate, rubber gasket and screws



GJ-C-V/GJ-CO2-V

GP-SA-V/GP-SA-IR-V

GP-ELK-V/GP-CO2-V

Detectors for mounting in pipes and ventilation ducts. Detectors are for use in non-explosive areas and can be fitted with different sensors according to the target gas.

As option the detectors can be delivered with either probe for ventilation pipes EM80701 or SS adaptor with 1/2" thread for pipe connection EM80700. Type of connection must be specified when ordering. Necessary gaskets and screws are included. The detectors are always delivered with a DIN plug and 5 meters of cable.



The detectors can be connected to alarm monitor type GJD-02C, GJD-04C, GJ-03R or amplifier module GP-AMP with alarm levels adjusted to the used gas (see separate data sheets for those monitors). The gas concentration is continuously measured in the range from 0 to 40,000 ppm or 0-100% LEL. The sensor signal is converted to a linear output signal 4-20 mA or 0-5V/0-10V. In addition, the monitors and the GP-AMP module have alarm relays for low alarm, high alarm and system fault.

geopal SYSTEM A/S®

Skelstedet 10B - DK-2950 Vedbæk, Danmark
Tel. +45 45 67 06 00
www.geopal.dk · info@geopal.dk
EA 11208NE *Subject to change without notice*



DIC444QMS

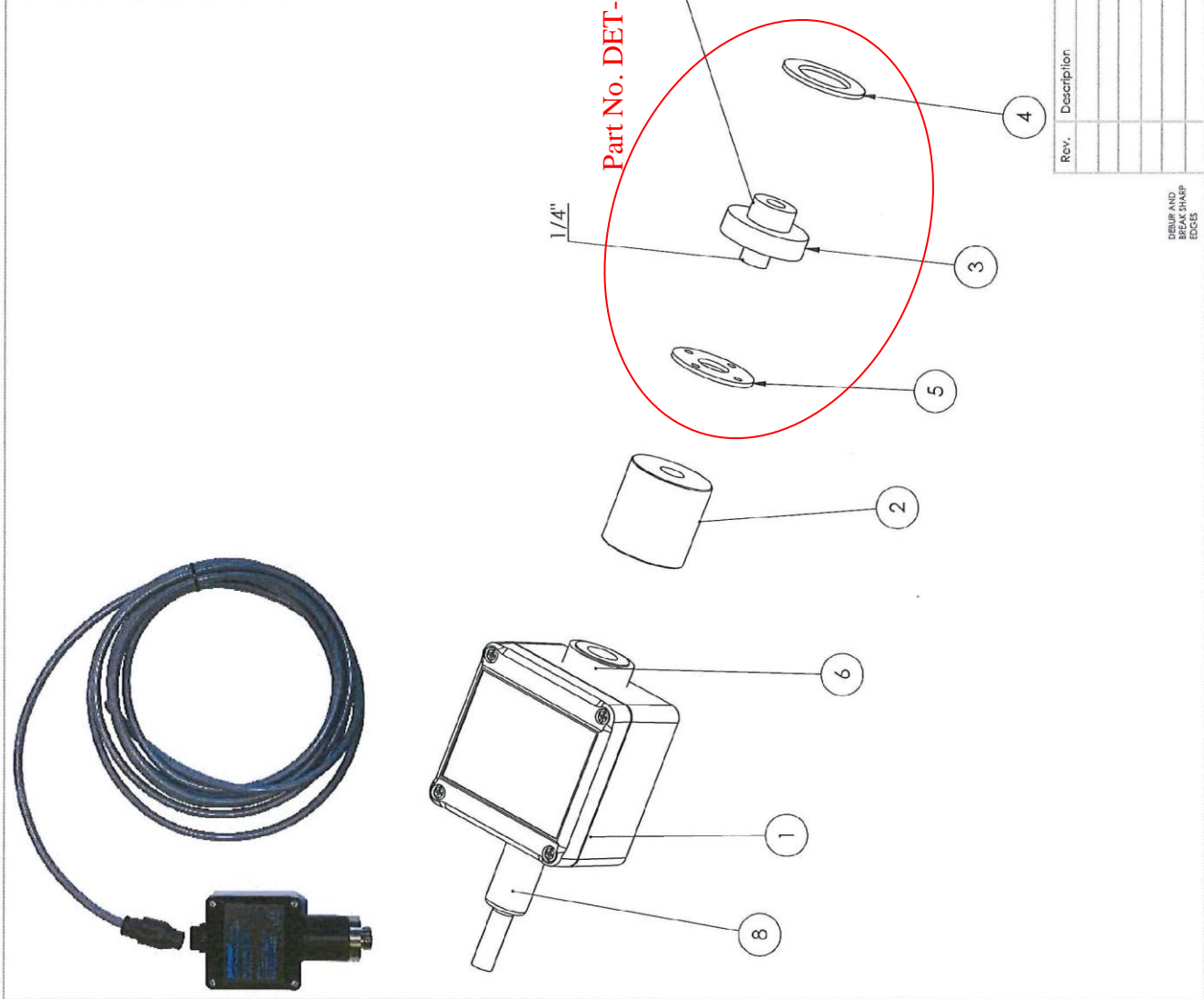


DBI reg.no. 233.301



SP14ATEX7159

ITEM NO.	PART NUMBER	DESCRIPTION	QTY.
1	EM-210-F	BOX	1
2	AD06080	Detector tube	1
3	AD06091	Connector	1
4	AI39550	Gasket	1
5	AI39540	Gasket	1
6	AD06050	Adaptor	1
8	msw8088	Cable - 5000 mm	1



Rev.	Description	Date	Int.	Modified by:	Drawn by:	Date:	Description:	REVISION
				CUVA	CUVA	12-03-2015	EM80700	A
							EM80700	Sheet
							EM80700	1 OF 1

DEBUR AND
BREAK SHARP
EDGES

